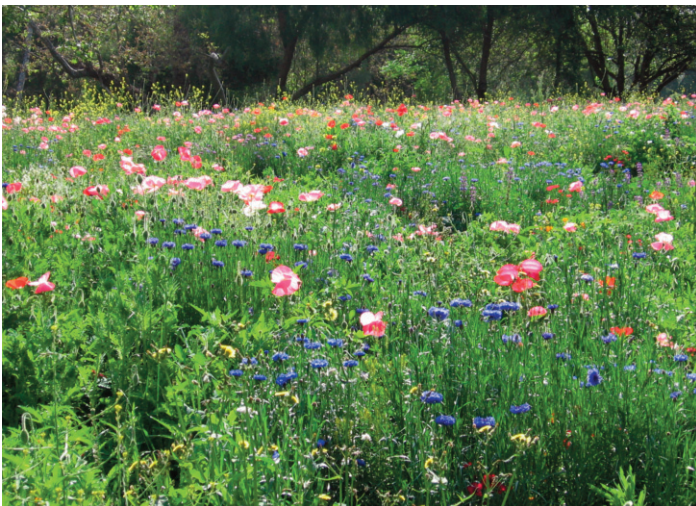




STOVER SEED® Erosion Control News

Beyond the Silt Fence: aesthetically pleasing, environmentally-friendly way to temporary erosion control

Straw mulch, soil binders, geotextiles, silt fencing, and varieties of erosion control blankets and mats all have potential roles to play when implementing temporary soil stabilization BMPs. Because the primary duty of construction site managers and erosion control specialists is to ensure adherence to stormwater runoff mandates, aesthetic considerations may take a back seat to utility, especially if there is a time crunch.



Yet there are cost-effective ways to stabilize soil, beautify the environment, and remain compliant through the prudent use of regionally viable, site-specific, custom native grass and wildflower seed blends.

The collateral benefits are many: temporary, as well as long-term meadows of native grasses are not only aes-

thetically pleasing, but they provide critical habitat for wildlife. Native wildflowers are a food source for pollinators and other beneficial insects.

Instead of slopes and swales covered in dried out, grey mulch, commuters and locals alike will appreciate a properly engineered, well-considered job site - one that enhances the surrounding environment. It creates goodwill. Bottom line: with a wide range of existing seed mixes and the ability to create custom blends, aesthetics no longer have to be an afterthought.

Case Study – In late Spring 2012, a California contractor, seeking to control runoff on a large construction project in Long Beach adjacent to nearby waterways looked to Stover Seed experts for technical advice on a temporary erosion control solution. Stover Seed is known in the industry for an exceptional range of custom seed mixes and expert advice.

Stover suggested a California Native Wildflower Mix, a blend of annual and perennial wildflowers for this non-irrigated site.

The mix was customized for the project to contain a large proportion of plants that would be drought-tolerant and showy given the late install date and small amount of precipitation expected after install. The result? Attractive, climate-tailored, ecologically diverse erosion control.



STOVER SEED®

1415 East 6th Street • P.O. Box 861715 • Los Angeles, California 90086
Phone: (213) 626-9668 • Toll-Free: (800) 621-0315 • Fax: (213) 626-4920
www.stoverseed.com